



NETFLIX
Instantly watch 13 Assassins today!

**Instantly watch movies
FREE TRIAL!** [Click here >](#)



[Watch live Eyewitness News coverage of Sandy's aftermath](#) | [See Pictures](#)
[Click here to send photos and videos to iWitness@wabc.com](#) | [School Closings](#)



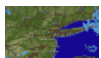
[WABC-TV New York, NY](#)



• Eyewitness News

- [New York City](#)
- [New Jersey](#)
- [Long Island](#)
- [Northern Suburbs](#)
- [US and World](#)
- [Politics](#)
- [Business & Consumer](#)
- [7 On Your Side](#)
- [Investigations](#)
- [Health News](#)
- [Lifestyle & Fun](#)
- [Entertainment](#)
- [ESPN New York](#)
- [ABC7 Sports & ESPN](#)
- [Most Popular](#)

• Accuweather ☀



[49°](#)

[P/SUNNY](#)

- [Weather Home](#)
- [AccuTrack Radar](#)
- [AccuTrack Interactive](#)
- [Futurecast](#)
- [School Closings](#)
- [MORE TOPICS +](#)

• Video & Photos

- [Video](#)
- [Eyewitness News Live](#)
- [Photo Galleries](#)
- [iWitness Photos/Videos](#)
- [Watch Full Episodes](#)
- [MORE TOPICS +](#)

• Resources

- [Eyewitness News Team](#)
- [Commuter Alert](#)
- [7 In Your Community](#)
- [Contests and Promotions](#)
- [Contact Us](#)
- [Lottery](#)
- [TV Listings](#)
- [ABC Shows](#)
- [Live Well Network](#)
- [Horoscopes](#)
- [Interact with Us](#)
- [MORE TOPICS +](#)

• Marketplace

- [New York Area Jobs](#)
- [Get Coupons](#)
- [Classifieds](#)

[SEE IT ON TV? CHECK HERE](#)

[Eyewitness News](#)



Long Island Viewpoint

Wednesday, October 24, 2012

Related Video


[All Live Video](#) : [All Video](#) »



- [VIDEO: LI Viewpoint on March 11, 2012: Part 1](#)
- [VIDEO: LI Viewpoint on March 11, 2012: Part 2](#)
- [VIDEO: LI Viewpoint on March 11, 2012: Part 3](#)
- [Long Island Viewpoint on July 1, 2012: Part 1](#)
- [Long Island Viewpoint on July 1, 2012: Part 2](#)
- [Long Island Viewpoint on July 1, 2012: Part 3](#)
- [Long Island Viewpoint on June 3, 2012: Part 1](#)
- [Long Island Viewpoint on June 3, 2012: Part 2](#)
- [Long Island Viewpoint on June 3, 2012: Part 3](#)
- [VIDEO: LI Viewpoint on December 4, 2011, Part 1](#)
- [VIDEO: LI Viewpoint on December 4, 2011, Part 2](#)
- [VIDEO: LI Viewpoint on December 4, 2011, Part 3](#)

Tags:

[eyewitness news](#)

- [Comment Now](#)
- [Email](#)
- [Print](#)
- [Report a typo](#)
-
-
-
-
-
- 

LONG ISLAND -- Want to know more about interesting programs in your community and your state?

Every Sunday morning more than 36,000 households tune in to "New York Viewpoint", "New Jersey Viewpoint" and "Long Island Viewpoint". The programs highlight the community & cultural efforts that enrich the quality of life in our neighborhoods.

These weekly round-table discussions are hosted by Eyewitness News anchor Ken Rosato. Viewpoint airs at 5:30am on Sunday mornings.

Long Island Viewpoint, Oct. 28, 2012

Segment One: Grandparents and finances

JOHN MIGLIACCIO, PH.D.
Assistant Vice President, MetLife Mature Market Institute

MatureMarketInstitute.com

Segment Two: Book: *Ordinary Miracles*

KRISSI McVICKER
Author of *Ordinary Miracles*, mother of three

ROBERT McVICKER
Husband and father three

OrdinaryMiraclesBook.com

Krissi McVicker's blog: StressFreeinFertilityblog.com
National Infertility Association: Resolve.org
(703) 556-7172

Segment Three: Chef Shawn Davis

SHAWN DAVIS
Chef Big Shake

ChefBigShake.com

(800) 216-9605

Long Island Viewpoint, March 11, 2012 (Also running on Sept. 16, 2012)

Segment One: Abdominal Aortic Aneurysm

APOSTOLOS TASSIOPOULOS, MD, FACS
Vascular Surgeon, Stony Brook Univ. Med. Center

WILLIAM PEPE
Treated for Abdominal Aortic Aneurysm

stonybrookmedicine.edu

Stony Brook Univ. Medical Center
631-638-2100

Segment Two: Workplace Violence

BILL WHITMORE
Chairman and CEO, AlliedBarton Security Services
Author, *Potential: Workplace Violence Prevention and Your Organizational Success*

AlliedBarton.com
PotentialTheBook.com

Segment Three: Mark Wood, "Electrify Your Strings" Program

MARK WOOD
Performer and Electric Violinist
Founder, "Electrify Your Strings" (EYS)

ALISSA JACKMAN
EYS Student

ElectrifyYourStrings.com
(516) 767-6677

Long Island Viewpoint, July 1, 2012 (Also running on Aug. 19, 2012)

Segment One: Prescription Drug Abuse

DAVID S. KLOTH, M.D.
Co-Author, *Pain-Wise: A Patient's Guide to Pain Management*
Past President, American Society of Interventional Pain Physicians

ASIPP.org
(270) 554-9412, ext. 215

Segment Two: Lyme Disease and Ticks

ANNE R. BASS, M.D.
Rheumatologist, Hospital for Special Surgery

MORTON JULIUS, D.D.S.
Patient with Lyme disease

HSS.edu
(212) 606-1000

Segment Three: Allergies & Adolescents

ATUL N. SHAH, M.D., FACAAI
Author, *Allergies, and Awesome You*

AmazingAllergist.com
(631) 395-5464

Long Island Viewpoint, June 3, 2012 (Also running on July 29, 2012)

Segment One: Cardiology/EECP

JOSEPH TARTAGLIA, MD, FACC
Cardiologist and Assistant Professor at New York Medical College

BERYL-MARIE COOPER
Heart patient treated with EECP

Vasomedical, Inc.
EECP.com
800-455-EECP (3327)

Segment Two: Inappropriate Medicine For Elderly

GISELE WOLF-KLEIN, MD
North Shore-Long Island Jewish Health System

American Geriatrics Society "Health in Aging" Foundation
HealthInAging.org

Segment Three: Nassau County Firefighters Museum

JOHN V. MURRAY
Chief Instructor, Nassau County Firefighters Museum
Former Chief, Rockville Centre Fire Dept.

ALANA PETROCELLI
Executive Director, Nassau County Firefighters Museum

NCFireMuseum.org
516-572-4177

Long Island Viewpoint, July 1, 2012

Segment One: Prescription Drug Abuse

DAVID S. KLOTH, M.D.
Co-Author, *Pain-Wise: A Patient's Guide to Pain Management*
Past President, American Society of Interventional Pain Physicians

ASIPP.org
(270) 554-9412, ext. 215

Segment Two: Lyme Disease and Ticks

ANNE R. BASS, M.D.
Rheumatologist, Hospital for Special Surgery

MORTON JULIUS, D.D.S.
Patient with Lyme disease

HSS.edu
(212) 606-1000

Segment Three: Allergies & Adolescents

ATUL N. SHAH, M.D., FACAAI
Author, *Allergies, and Awesome You*

AmazingAllergist.com
(631) 395-5464

Long Island Viewpoint, June 3, 2012

Segment One: Cardiology/EECP

JOSEPH TARTAGLIA, MD, FACC
Cardiologist and Assistant Professor at New York Medical College

BERYL-MARIE COOPER
Heart patient treated with EECP

Vasomedical, Inc.
EECP.com
800-455-EECP (3327)

Segment Two: Inappropriate Medicine For Elderly

GISELE WOLF-KLEIN, MD
North Shore-Long Island Jewish Health System

American Geriatrics Society "Health in Aging" Foundation
HealthInAging.org

Segment Three: Nassau County Firefighters Museum

JOHN V. MURRAY
Chief Instructor, Nassau County Firefighters Museum
Former Chief, Rockville Centre Fire Dept.

ALANA PETROCELLI

Executive Director, Nassau County Firefighters Museum

NCFireMuseum.org

516-572-4177

Long Island Viewpoint, March 11, 2012 (Also running on May 13, 2012)

Segment One: Abdominal Aortic Aneurysm

APOSTOLOS TASSIOPOULOS, MD, FACS
Vascular Surgeon, Stony Brook Univ. Med. Center

WILLIAM PEPE
Treated for Abdominal Aortic Aneurysm

stonybrookmedicine.edu

Stony Brook Univ. Medical Center
631-638-2100

Segment Two: Workplace Violence

BILL WHITMORE
Chairman and CEO, AlliedBarton Security Services
Author, *Potential: Workplace Violence Prevention and Your Organizational Success*

AlliedBarton.com

PotentialTheBook.com

Segment Three: Mark Wood, "Electrify Your Strings" Program

MARK WOOD
Performer and Electric Violinist
Founder, "Electrify Your Strings" (EYS)

ALISSA JACKMAN
EYS Student

ElectrifyYourStrings.com

(516) 767-6677

Long Island Viewpoint, Dec. 4, 2011 (Airing again on Feb. 5, 2012)

Segment One: Vision Service Plan (VSP) and Diabetes

GWEN GNADT, OD, FAAO

VSP Optometrist

VSP.com/diabetes

VSP.com

631-588-5100

Segment Two: Quality Services for Autism Community (QSAC) and Martha Wash

MARTHA WASH

Legendary Performer / Official Spokesperson, QSAC

LISA VEGLIA, LCSW, MPA

Deputy Executive Director, QSAC

JOE MORAN

Communications Director, QSAC

QSAC.com

(212) 244-5560

Segment Three: Gen Y and Saving

BILL LOSEY, CFP, CSA

Retirement Strategist

BillLosey.com

(518) 581-1666

Long Island Viewpoint, October 9, 2011 (Originally aired on July 17 2011)

Segment One: Common Sense Care Book

VINCENT D'AMORE, MD, FACEP

Author, *Common Sense Care*

ER Physician, Premier Care

PremierCareDoc.com

718-803-2273 (CARE)

Segment Two: SituCon & School Security

NICHOLAS STIRLING, PH.D.

Assistant Superintendent, Port Washington School District

SETH CIRKER Founder and President, SituCon Systems

DAVID BAYLEN Director of Technology, Port Washington School District

Port Washington School District
Portnet.k12.ny.us
516-767-5000

SituCon Systems
Situcon.com
516-767-5100

Segment Three: Poet Annabelle Mosley

ANNABELLE MOSELEY
Poet & Writer

AnnabelleMoseley.com

String Poet Journal
StringPoet.com

Long Island Viewpoint, September 18, 2011 (Originally aired on April 10, 2011):

Segment One: Multiple Sclerosis Partners in Care

LAINIE MESSINA
Vice President, Private Care Services, Partners in Care

RENATA GELMAN, RN, BSN
Clinical Manager, Partners in Care

Partners in Care
PartnersinCareNY.org
888-9-GET-HELP (438- 4357)

Segment Two: Cheating in Classrooms

MICHAEL HARTNETT, Ph.D.
Author, "The Great SAT Swindle," English teacher at Jericho H.S. on Long Island, adjunct English professor at Long Island University

MichaelHartnett.net

Segment Three: Inner ear and Dyslexia

HAROLD LEVINSON, M.D.
Neurologist/Psychiatrist, Levinson Medical Center for Learning Disabilities

DyslexiaOnline.com

516-482-2888
800-334-READ (7323)

Long Island Viewpoint, August 21, 2011 (Originally aired on December 5, 2010):

Segment One: Head Injury Association

LIZ GIORDANO
CEO, Head Injury Association

STUART GLEIBER
Father of Gary, Brain Injury Survivor
Founding Board Member, Head Injury Assoc.

JILL GLEIBER
Mother of Gary, Brain Injury Survivor
Founding Board Member, Head Injury Assoc.

Head Injury Association
HeadInjuryAssoc.org
631-543-2245

Segment Two: Rock and Wrap it Up

SYD MANDELBAUM
CEO & Founder, Rock and Wrap It Up!

Rock and Wrap It Up!
877-691-FOOD (3663)
RockAndWrapItUp.org

ROSE FOLEY
School Programs Director, Rock and Wrap It Up!

TAINA THERMIDOR
Director, National Hotel Wrap!, Rock and Wrap it Up!

Segment Three: Horse Racing & Drugs

DEAN DELUKE, DMD, MBA
Author, Shedrow
Surgeon & thoroughbred owner

Book: "Shedrow"
Shedrow1.com

Long Island Viewpoint, July 17 2011

Segment 1: Common Sense Care Book

VINCENT D'AMORE, MD, FACEP
Author, *Common Sense Care*
ER Physician, Premier Care

PremierCareDoc.com
718-803-2273 (CARE)

Segment 2: SituCon & School Security

NICHOLAS STIRLING, PH.D.
Assistant Superintendent, Port Washington School District

SETH CIRKER Founder and President, SituCon Systems

DAVID BAYLEN Director of Technology, Port Washington School District

Port Washington School District
Portnet.k12.ny.us
516-767-5000

SituCon Systems
Situcon.com
516-767-5100

Segment 3: Poet Annabelle Mosley

ANNABELLE MOSELEY
Poet & Writer

AnnabelleMoseley.com

String Poet Journal
StringPoet.com

Long Island Viewpoint, May 15, 2011 (Originally aired on October 17, 2010):

Segment 1: Adelphi NY Statewide Breast Cancer Hotline & Support Program

ANGELA M. PAPALIA, LMSW
Soc. Worker, Adelphi NYS Br. Cancer Hotline

NAOMI CUNNINGHAM, BS

Sisters United in Health
Hermanas Unidas en la Salud

Adelphi NYS Breast Cancer Hotline
800-877-8077 - Hotline
Adelphi.edu/NYSbreastCancer

Segment Two: Island Harvest

RANDI SHUBIN DRESNER
Pres. & CEO, Island Harvest

Island Harvest
IslandHarvest.org
516-294-8528

Segment Three: Diabetes & Heart Disease

FREDERIC VAGNINI, MD, FACS
Med. Dir., Heart, Diabetes & Weight Loss Centers of NY
Author, Weight Loss Plan for Beating Diabetes

Heart, Diabetes & Weight Loss Centers of NY
Vagnini.com
516-222-2288

Long Island Viewpoint, April 10, 2011:

Segment One: Multiple Sclerosis Partners in Care

LAINIE MESSINA
Vice President, Private Care Services, Partners in Care

RENATA GELMAN, RN, BSN
Clinical Manager, Partners in Care

Partners in Care
PartnersinCareNY.org
888-9-GET-HELP (438- 4357)

Segment Two: Cheating in Classrooms

MICHAEL HARTNETT, Ph.D.
Author, "The Great SAT Swindle," English teacher at Jericho H.S. on Long Island, adjunct English professor at Long Island University

MichaelHartnett.net

Segment Three: Inner ear and Dyslexia

HAROLD LEVINSON, M.D.
Neurologist/Psychiatrist, Levinson Medical Center for Learning Disabilities

DyslexiaOnline.com
516-482-2888
800-334-READ (7323)

Long Island Viewpoint, January 9, 2011 (Originally aired August 1, 2010):

Segment One: Autism

KATHY MANNION
Associate Executive Director, Nassau Suffolk Services for Autism

MARISSA BENNETT
Outreach Coordinator, Genesis Outreach Autism Center

LISA GORING
National Director of Family Services, Autism Speaks

Nassau/Suffolk Services for Autism
NSSAInfo.org
631-462-0386

Autism Speaks
AutismSpeaks.org
888-288-4762

Eden II Programs/Genesis Outreach Autism Center.
Eden2.org

Segment Two: Veterans

JOHN JAVIS
Chair, Veteran's Health Alliance of Long Island

HERB ROSEN
Director, Veteran's Health Alliance of Long Island

Veteran's Health Alliance of L.I.
MHANC.org
516-504-HELP (4357)

Segment Three: Juvenile Diabetes

SHIRLEY RODRIGUEZ
Juvenile Diabetes Advocate

MATTHEW RODRIGUEZ
Juvenile Diabetes Fundraiser

Juvenile Diabetes Research Foundation
JDRF.org

Winthrop University Hospital
Winthrop.org

Long Island Viewpoint, December 5, 2010:

Segment One: Head Injury Association

LIZ GIORDANO
CEO, Head Injury Association

STUART GLEIBER
Father of Gary, Brain Injury Survivor
Founding Board Member, Head Injury Assoc.

JILL GLEIBER
Mother of Gary, Brain Injury Survivor
Founding Board Member, Head Injury Assoc.

Head Injury Association
HeadInjuryAssoc.org
631-543-2245

Segment Two: Rock and Wrap it Up

SYD MANDELBAUM
CEO & Founder, Rock and Wrap It Up!

Rock and Wrap It Up!
877-691-FOOD (3663)
RockAndWrapItUp.org

ROSE FOLEY
School Programs Director, Rock and Wrap It Up!

TAINA THERMIDOR
Director, National Hotel Wrap!, Rock and Wrap it Up!

Segment Three: Horse Racing & Drugs

DEAN DELUKE, DMD, MBA
Author, Shedrow
Surgeon & thoroughbred owner

Book: "Shedrow"
Shedrow1.com

Long Island Viewpoint, September 12, 2010 (Originally aired July 11, 2010):

Segment One: Kids Cyber Safety

ALANE FAGIN, MS
Ex. Dir., Child Abuse Prevent. Services

Child Abuse Prevention Services
Capsli.org
516-621-0552
631-289-3240

RENEE CLAUSELLE, PSY.D.
Founder & Clin. Dir., Child and Family Psychology
Child & Family Psychology

Child & Family Psychology
Psychologists4kids.com
516-750-4841

AUDREY GOROPEUSCHEK, PRINCIPAL
Long Beach Middle School

Segment Two: How to Bully-Proof Your Kid

ALANE FAGIN, MS
Ex. Dir., Child Abuse Prevent. Services

Child Abuse Prevention Services
Capsli.org
516-621-0552
631-289-3240

RENEE CLAUSELLE, Psy.D.
Founder & Clin. Dir., Child and Family Psychology

Child & Family Psychology
Psychologists4kids.com

516-750-4841

Segment Three: Montauk Tango

LEWIS GROSS
Author, Holistic Dentist

Montauk Tango
MontaukTango.com

Long Island Viewpoint, August 22, 2010:

Segment One: LIRR Gap Rap

DR. JOHN D. CLARKE
Medical Director, LIRR

HELENA E. WILLIAMS
President, LIRR

For Gap Rap video info:
mta.info

For more info on Dr. Clarke's CD:
HealthHopmusic.com

Segment Two: Small Business Owners/Gov't Contracts

MAUREEN BORZACCHIELLO
Creative Display Solutions

giveme5.com

open.com/governmentcontracts

Segment Three: Heart of Sailing

LINDA JOHNSON
Dir., Heart of Sailing

CHRISANNE PETRONE
Long Island Mom

Heart of Sailing
HeartOfSailing.org
812-935-SAIL (7245)
631- 828 -3828 (LI office)

Long Island Viewpoint: May 23, 2010 (encore presentation from November 1, 2009):

Segment One: Make a Wish Foundation

COLIN
Make-A-Wish Kid

PATRICIA
Make-A-Wish Parent

JOHN F. STEWART
Board Member, Make-A-Wish Foundation of Metro NY

[Make-A-Wish Foundation of Metro NY](#)
212-505-WISH (9474)

[Make-A-Wish Foundation](#)
800-722-WISH (9474)

Segment Two: Ways to Make A Wish

STEFANIE VUOTTO
WISH Alumnus/Volunteer

CATHY ATRIA
Director, WISHGranting, Make-A-Wish Foundation of Metro NY

[Make-A-Wish Foundation of Metro NY](#)
212-505-WISH (9474)

[Make-A-Wish Foundation](#)
800-722-WISH (9474)

Segment Three: The Long Island Latino International Film Festival

JANET CRUZ
Co-Founder, LILIFF

T. J. COLLINS
Co-Founder, LILIFF

MITCHELL TEPLITSKY
Director, "Soy Andina"

[L.I. Latino International Film Festival](#)
516-983-9830

LONG ISLAND VIEWPOINT: January 3, 2010 (encore presentation)

----Segment One: LI Crisis Center----

BETTINA MAIER, MSW

Program Asst., LI Crisis Center

JOSHUA BOOK

Producer, "Look Closer On Line"

CANDY WASHINGTON

Actress, "Look Closer On Line"

Long Island Crisis Center

516-679-1111 - L.I. Crisis Center 24hr. Hotline

www.LongIslandCrisisCenter.org

LookCloserOnline.com

----Segment Two: SAGE ----

RANDI ANDERSON, JD, LCSW-R

Dir. of Social Services, SAGE

KERRIE O'NEILL, MSW

Director of Programs, SAGE- Long Island

SAGE- Long Island

631-665-2300

www.SageLI.org

SAGE

212-741-2247

SageUsa.org

----Segment Three: WORC----

PETER SMERGUT

Exec. Dir./Life's WORC

DONALD BARRICK

Board Member, Life's WORC

Life's WORC

516-741-9000

LifesWORC.org

LONG ISLAND VIEWPOINT: December 6, 2009 (encore presentation)

----Segment One: Swine Flu ----

AARON GLATT, M.D.

Infectious Diseases Society of America, Pres., & CEO, New Island Hospital

New Island Hospital

516-579-6000

NewIslandHospital.org

Infectious Diseases Society of America

IDSociety.org

----Segment Two: Elder Fraud----

SANDRA TIMMERMANN, Ed.D.

Dir., MetLife Mature Market Institute

MetLife Mature Market Institute

203-221-6580

MatureMarketInstitute.com

----Segment Three: Child Advocate Steve Simpson----

STEVE SIMPSON

Author, Runaway, Child Abuse Survivor

Power Publishing Corp.

PowerPublishingCorp.com

National Runaway Switchboard

800-RUNAWAY (786-2929)

Long Island Viewpoint for Sunday, Sept. 20, 2009

Segment 1 Resources:

516-209-1110

Operation Get Ahead, Inc.

516-742-0940

LL Dent Restaurant

[LL Dent Restaurant](#)

Segment 2 Resources:

[Memorial Sloan-Kettering Cancer Center, LI](#)

516-256-3600

Segment 3 Resources:

516 509-2406

Long Island Sled Hockey, Inc.

[Long Island Sled Hockey, Inc.](#)

LONG ISLAND VIEWPOINT: August 23, 2009

This weeks LI viewpoint was originally aired on January 18, 2009.

* [Click for the program information.](#)

LONG ISLAND VIEWPOINT: May 17, 2009

This weeks LI viewpoint was originally aired on December 21, 2008.

* [Click for the program information.](#)

LONG ISLAND VIEWPOINT: March 8, 2009

----*Segment One: OGA Award*----

LEISA DENT

Chef/Owner, LL Dent Restaurant, OGA, Inc., Alumni Business Award

TINA HODGE-BOWLES

Executive Director, Operation Get Ahead, Inc.

ROSEMARY DEHLOW

L. I. Dir., Community Housing Innovations

Operation Get Ahead, Inc.

516-209-1110

LL Dent Restaurant

516-742-0940

www.LLDent.com

----*Segment Two: Cancer treatments MSKCC*----

DR. RICHARD GEWANTER

Chief of Radiation Oncology, MSKCC, LI

Memorial Sloan-Kettering Cancer Center, LI

516-256-3600

MSKCC.org

----**Segment Three: Disabled Children & Sled Hockey**----

BRYAN BLOMQUIST

Pres./Coach, Long Island Sled Hockey, Inc.

FRANK MARTIN

VP, Long Island Sled Hockey, Inc.

Long Island Sled Hockey, Inc.

516 509-2406

LiSledHockey.org

LONG ISLAND VIEWPOINT: January 18, 2009

----**Segment One: CHI Community Housing**----

Guests:

ROSEMARY DEHLOW

L. I. Dir., Community Housing Innovations

For more information:

Community Housing Innovations, Inc.

516-280-3243 (Nassau)

631-475-6390 (Suffolk)

www.CHIgrants.org

----**Segment Two: Girl Scouts & Bullying**----

Guests:

DONNA CERAVOLO

Exec. Dir., Girl Scouts of Nassau Cty.

MARYANNE BROWN

Ambassador, Girl Scout

For more information:

Girl Scouts of Nassau County

516 741-2550

www.gsnc.org

----**Segment Three: "A Criminal Injustice"**----

Guests:

RICHARD FIRSTMAN

Co-Author, A Criminal Injustice

JAY SALPETER

Co-Author, A Criminal Injustice

For more information: **Fortress Innocence Group**
866-791-2061
www.FortressInnocence.com

LONG ISLAND VIEWPOINT: December 21, 2008

----Segment One and Two: F.R.E.E.----

Guests:
ROBERT S. BUDD
CEO, Family Residences & Essential Enterprises (FREE)
ROSELLE JEROME
Mother of Program Participant **HARVEY WEISENBERG**
(D) Assemblyman, 20th District

For more information:
Family Residences & Essential Enterprises (FREE)
516-870-1622
www.FamilyRes.org

----Segment Three: Violence Against Women ----

Guests:
SHEILA DAUER, Ph. D.
Amnesty International, USA
MINDY PERLMUTTER, LCSW
Nassau Cty. Coalition Against Domestic Violence

For more information:
Amnesty International, USA
212-807-8400
www.AmnestyUSA.org/women
Nassau Cty. Coalition Against Domestic Violence
516-542-0404 (24 Hour Hotline)
www.cadvnc.org

LONG ISLAND VIEWPOINT (first aired June 1, 2008)

----Segment One: Driving in Safe Lane----

Guests:
WENDY TEPFER
Exec. Dir., Community Parent Center
INEZ BIRBIGLIA
Chairperson, Allstate Foundation

CANDICE STARK

Mom & Speaker, Driving In the Safe Lane

ADAM STARK

1982 - 2001

For more information:

Community Parent Center

(516) 771-9346

www.CommunityParentCenter.org

Allstate Foundation

www.Allstate.com/Foundation

----Segment Two: Autism----

Guests:

ELLENMORRIS TIEGERMAN, PH.D.

Founder and Exec. Dir., SLCD

TOYA DAVIS

Mother, Parent Liaison, SLCD

JONATHAN DAVIS

Former Student of SLCD

For more information:

School for Lang. & Comm. Development

516.609.2000

www.SLCD.org

----Segment Three: "In The Hamptons" Book----

Guests:

DAN RATTINER

Author, In The Hamptons

DAN RATTINER

Editor and Publisher, Dan's Papers.

For more information:

Dan's Papers

www.DansHamptons.com

"In The Hamptons" www.DanRattiner.com

[Get more Eyewitness News »](#)

Tags:
[eyewitness news](#)

- [Comment Now](#)
- [Email](#)
- [Print](#)
- [Report a typo](#)
-
-
-
-
-
- 

88 people recommend this.

Recently Published

[Network programming airing on digital channel 7.2](#)

- [Comment Now](#)
- [Share](#)



[Preparing for Sandy](#)

- [Comment Now](#)
- [Share](#)



[Preparing for Sandy](#)

- [Comment Now](#)
- [Share](#)

0 comments

[Post A Comment](#)

Be the first to make a comment!

(Max. 500 Characters)

7online.com and its parent and affiliated companies are not responsible for the content of comments posted above or for anything arising out of use of the above comments or other interaction among the users. While we may delete comments and block or take other action against users who we determine at our discretion have violated our rules, we cannot always do so. Please see our [Terms of Use](#) for additional policies applicable to these comments.

Post

By commenting, you agree to our [Terms of Use](#).

Sponsored Content

Grants for school if you qualify!



Return to school with a grant if you qualify. You may be losing up to \$21,900 every year you don't go back to school. [More](#)

Vote Nov. 6th for Barack



What are you waiting for? Confirm your voting location today. [More](#)

Coffee Bean That Melts Fat?



Weight Loss Experts Are Raving. Best online price and Free Shipping. [More](#)

Advertisement

NETFLIX

Instantly watch unlimited TV episodes & movies!

1 MONTH FREE TRIAL

CLICK HERE >

Share this Story

Recommend 88 people recommend this.

Tweet 8

Recommend this on Google

News Headlines

Video

- [Out of gas, full of frustration after Sandy](#)
- [Hurricane Sandy: How You Can Help, Get Help](#) 26 min ago
- [Sandy relief: Disney donates \\$2M, Day of Giving](#)
- [Death toll rises, frustration mounts in New York City](#)
- [Staten Island says help is slow after Sandy](#)
- [Subways rolling, but commute expected to crawl](#)
- [Scarce gas leads to big lines at the pumps](#) 34 min ago

- [Rebuilding process will be long at the Jersey Shore](#) 39 min ago
- [Homeland Security chief reviews Connecticut storm damage](#)
- [Slow progress in Long Island cleanup after Sandy](#) 54 min ago
- [Photos: Hurricane Sandy: Viewer Photos](#)

MORE: [Story Tips](#) | [Get Alerts](#) | [Send Photos](#) | [Lottery numbers](#)

• **1.**

-



- [Live Sandy coverage from Eyewitness News](#)

• **2.**

-



- [Commuting nightmare continues in Sandy's wake](#)

• **3.**

-



- [AccuWeather: Chilly with spotty showers](#)

• **4.**

-



- [Aftermath of Hurricane Sandy: Belmar, NJ...](#)

[All Live Video](#) : [All Video](#) »

[ABC News: Top Stories](#)

1. [Sandy Takes Young Victims in Prime of Life](#)
2. [New Benghazi Account Bolsters CIA](#)
3. [Biden Reads 'Top 10' on Letterman](#)
4. [Secret Service Suicide Investigated](#)
5. [Sandy Spurs Talk of Sea Barrier for NY](#)
6. [Christie Pushes for Faster Recovery](#)
7. [Soldier Guilty of Murder-for-Hire](#)
8. [3 Pitt Players Charged With Assault](#)
9. [Parents Attack Daughter With Acid](#)
10. [Russia Warns West Over Syria Moves](#)

LiveWell NETWORK

OnTheRedCarpet.com

Ali Competes in Half

CMA Awards 2012: List of

[Ironman](#)

[The Old Hen Bed and Breakfast](#)

[Copy Kat Recipes](#)

[winners](#)

['Flight.' 'Wreck-It Ralph' reviewed by Mr....](#)

[Taylor Swift talks 'Red' success and supporting...](#)

Most Popular

[Go to Most Popular](#)

Most Viewed Stories



[Commuting nightmare continues in Sandy's wake](#)

Most Viewed Video



[Sandy's Aftermath: Lindenhurst, Long Island](#)

Most Viewed Photos



[Hurricane Sandy: Viewer Photos](#)

Sponsored Listings

Black Friday 52" TVs: \$49.53

Get a 52" LED TV for \$49.53. Limit One Per Month.
Grab Bids Now!
www.Quibids.com

Woman is 54 But Looks 27

Mom releases simple facelift secret that angered doctors...
ConsumerLifestyles.org

Weird Loophole in Georgia

If you pay more than \$7 for car insurance you better read this now...
www.ConsumerFinanceDaily.com

[Buy a link here](#)

Advertisement

MORE 7ONLINE.COM



[Your Home for the Marathon](#)



[Making Strides 2012!](#)



[Weekdays at 3 p.m.!](#)

[Get a preview here](#)



[Once Upon a Time on ABC7!](#)



[Find out more](#)

[and take the pledge!](#)



[Nashville on ABC7!](#)

[Everyone in](#)



[Last Resort on ABC7!](#)



[Columbus Day Parade on ABC7!](#)



[666 Park Avenue on ABC7!](#)



[Revenge on ABC7!](#)

Get your revenge on



[Sweet On Books!](#)

Check out the latest
Lincoln Center



[Lincoln Center on 7online!](#)



[New iPad App!](#)

Download or



[WABC Eyewitness News Alarm App](#)

Find out More!



[Wheel of Fortune in NYC!](#)



[Weekends on ABC7](#)

Are you ready for an

- [7online home](#)
- [Site Map](#)
- [RSS](#)
- [Advertise with Us](#)
- [Contact Us](#)
- [Online Public Inspection File](#)
- [Technical Help](#)
- [ABC.com](#)
- [ABCNews.com](#)

- [Privacy Policy](#)
- [Interest-Based Ads](#)
- [Safety Information for this site](#)
- [Terms of Use](#)
- Copyright ©2012 ABC Inc., WABC-TV/DT New York, NY. All Rights Reserved.

